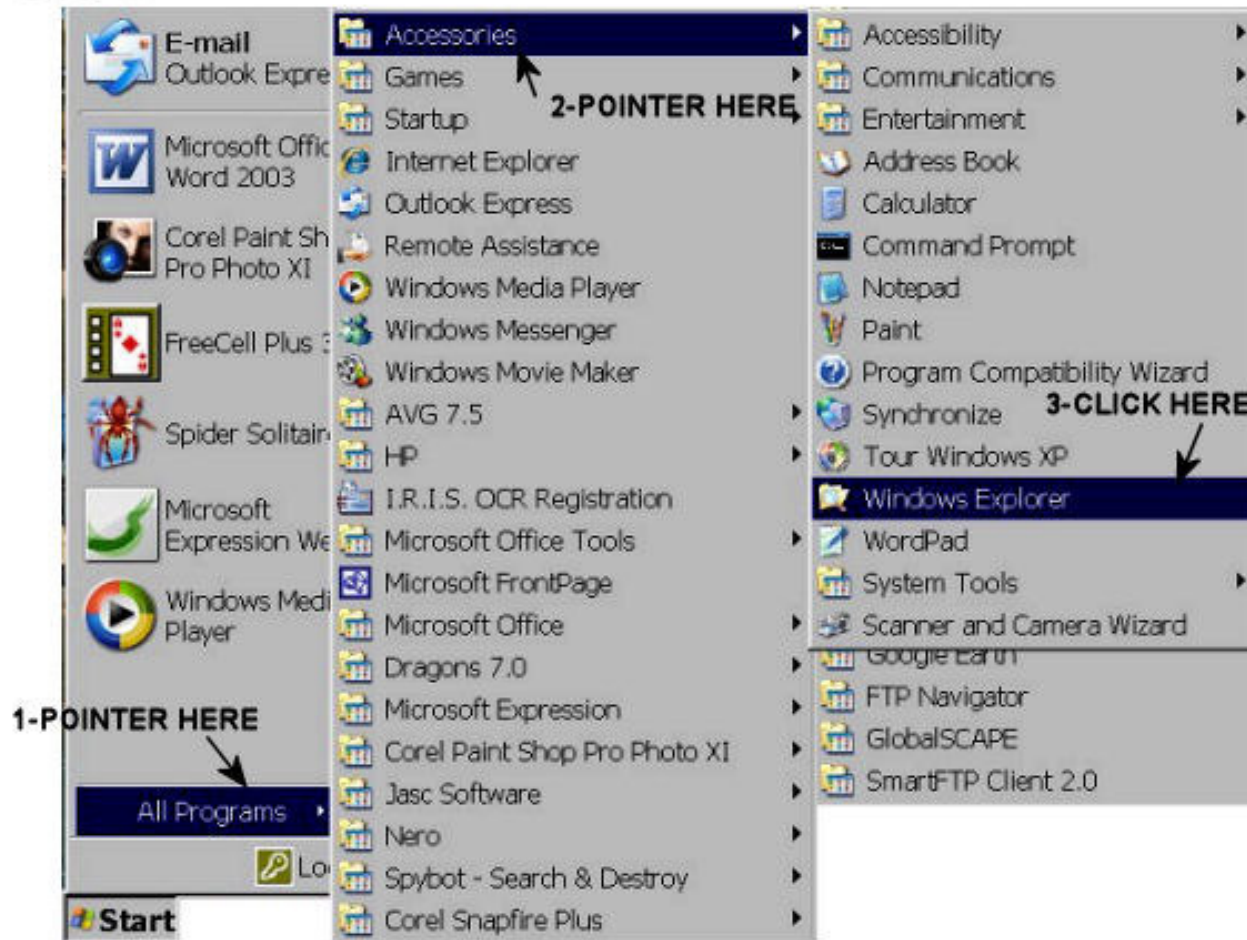


SMV TUESDAY COMPUTER GROUP, APRIL 17, 2007 CHK DISK-DEFRAG

FIRST, LOCATE THE C DRIVE, WHERE IS IT?????????????????????????????

STEPS

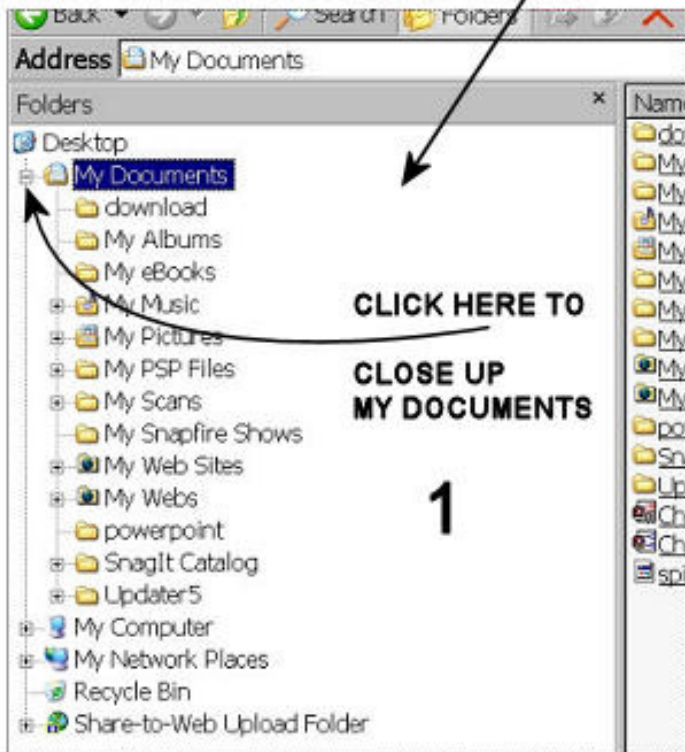


SHEET A1

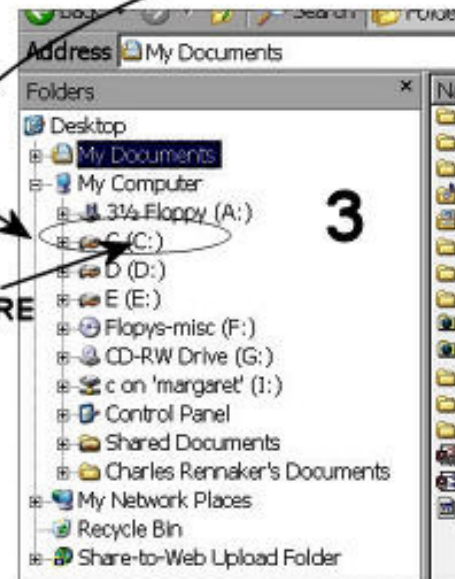
**CREATED BY
CHARLES V. RENNAKER
7473chas@cvrennaker.com**

CONTINUED FROM SHEET A1

THIS IS A PARTIAL VIEW OF WINDOWS EXPLORER
NOTICE THAT "MY DOCUMENTS" IS OPEN

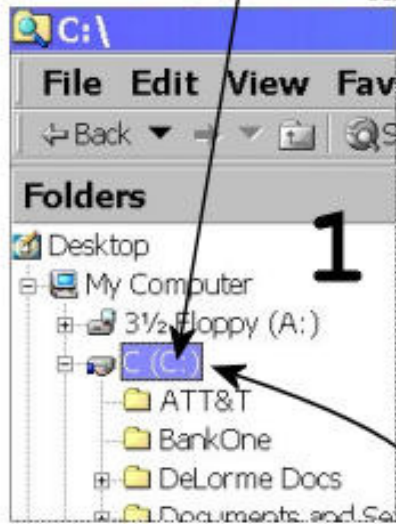


CLICK HERE EXPANDS MY COMPUTER
REVEALING THIS INFORMATION



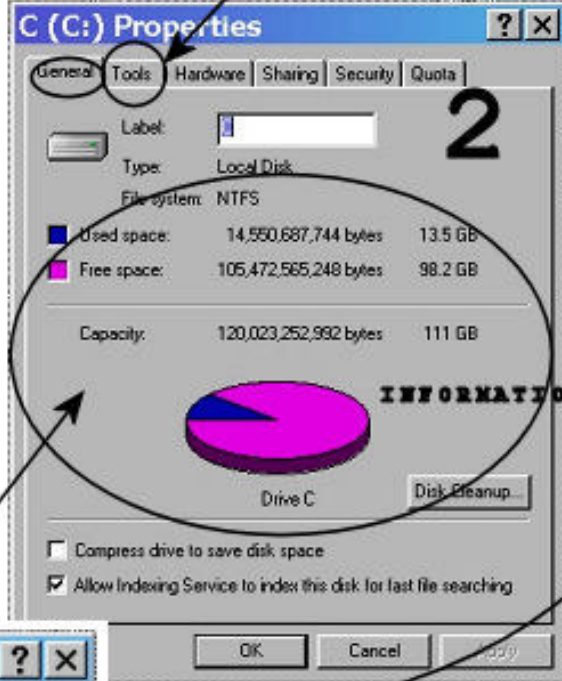
RIGHT CLICK HERE
AS DESCRIBED
ON SHEET 1
APRIL 17, 2007
FIG. 1

SMV TUESDAY COMPUTER GROUP, APRIL 17, 2007 **CHK DISK-DEFRAG OR ERROR CHCK-DEFRAG**
LOCATE THE C: DRIVE, **DEFAULT TAB** **CLICK HERE FOR THIS**



1

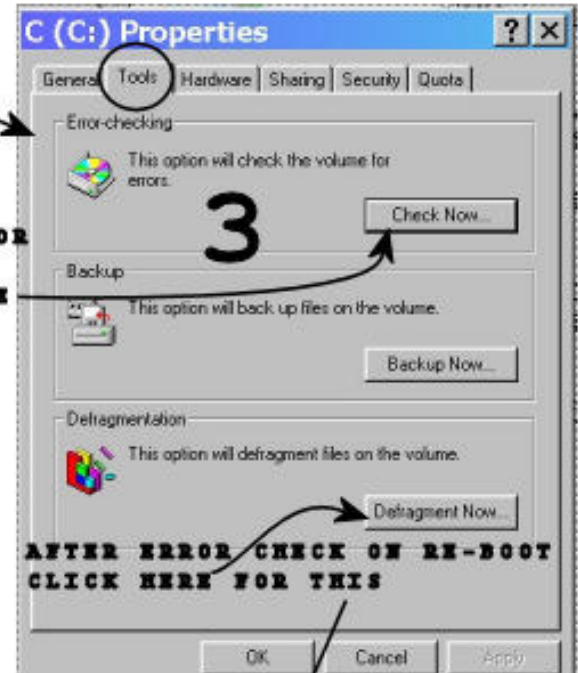
RIGHT CLICK HERE BRINGS UP THIS



2

INFORMATION

FOR HARD DRIVE ERROR CHECKING CLICK HERE BRINGS UP THIS



3

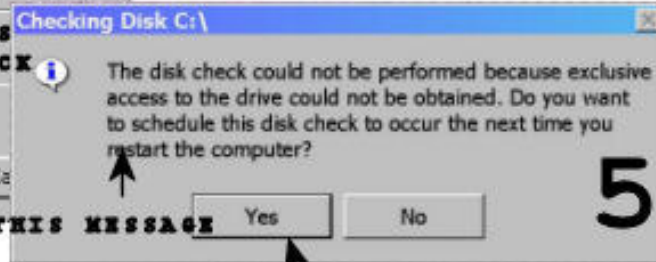
AFTER ERROR CHECK ON RE-BOOT CLICK HERE FOR THIS



4

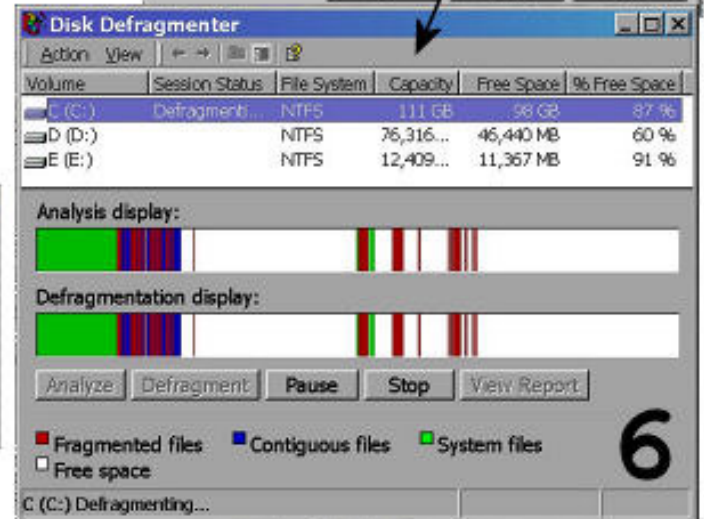
CLICK THE BOXES TO ADD THE CHECK MARKS THEN CLICK HERE

BRING US THIS MESSAGE



5

TO START CLICK HERE, CHECKING WILL START AT THE NEXT RE-BOOT



6

WE WILL DISCUSS THIS IMAGE

Created by:
 Charles V. Rensaker
 Shadow Mountain Village
 Computer Clubs
 73-cvr-74@smvcc.net